



THE SCA GLOBAL
THE SUPPLY CHAIN ACADEMY-SCA GLOBAL

Your Preferred Supply Chain Institute

2025/2026 Fees

Brochure

Contact details:

Supply Chain Academy-SCA Global

info@supply-chain.academy

www.supply-chain.academy

(+2779) 081 9412 (WhatsApp)

(+2787) 057 6577 (Calls)

Follow Us On Social Media



Table Of Contents

03

QCTO accredited
Occupational Certificate:
Supply Chain Practitioner

04

International
Diploma in
Supply Chain
Management

05

International
Certificate in
Logistics &
Transport

06

International
Diploma in
Logistics &
Transport

07

International
Advanced Diploma
in Logistics &
Transport

08

International
Diploma in
Procurement &
Supply

09

International
Advanced
Diploma in
Procurement &
Supply

10

International
Professional
Diploma in
Procurement &
Supply

11

Advanced
Certificate in
Procurement &
Supply
Operations

12

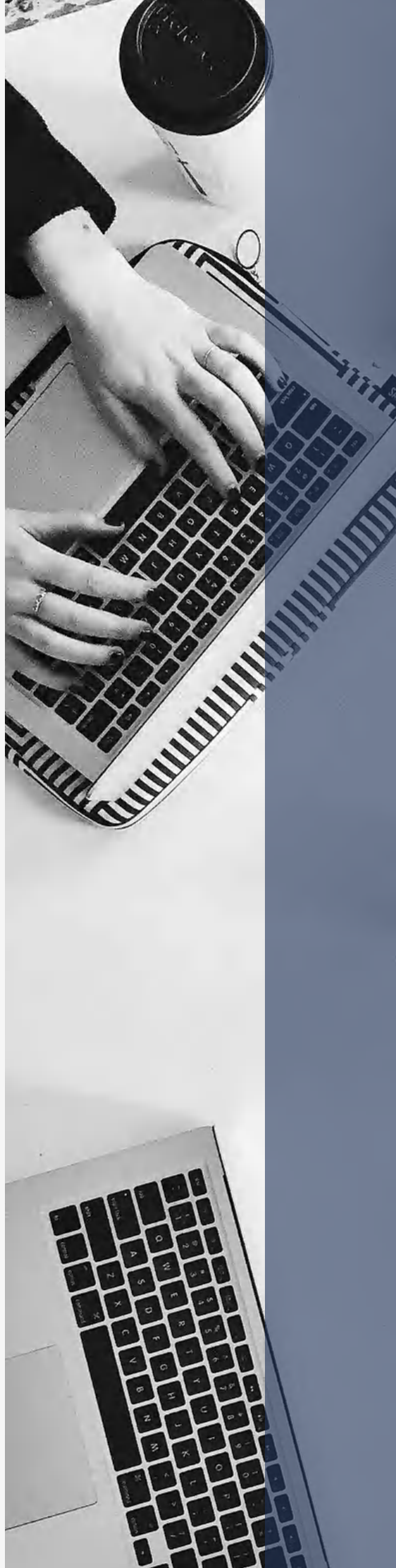
Certificate in
Procurement &
Supply
Operations

13

International Certificate
in Supply Chaining &
Operations

14

The End
(Banking &
Contact Details)



<div>Silver Option</div> <div>eLearning (excl. revision classes)</div>	<div>Gold Option</div> <div>eLearning (live revisions & support)</div>	<div>Platinum Option</div> <div>Online Classes Campus/Classroom-based</div>
--	--	---

QCTO accredited Occupational Certificate: Supply Chain Practitioner - NQF Level 5.

<div>Monthly tuition fees include: Live Tution/eLearning,Course Material, and Admin Support</div>	<div>R1550pm x 12 months</div>	<div>R1750pm x 12 months</div>	<div>R2629pm x 12 months R3750pm x 12 months</div>
<div>Core Modules (Unit Standards)</div> <div> <div>333905000-KM-01</div> <div>• Supply Chain Environments, L5, Cr10</div> </div> <div> <div>333905000-KM-02</div> <div>• Supply Chain Operations, L5, Cr10</div> </div> <div> <div>333905000-KM-03</div> <div>• Supply Chain Workflow, L5, Cr10</div> </div> <div> <div>333905000-KM-04</div> <div>• Inventory and Logistics Operations, L5, Cr10</div> </div> <div> <div>333905000-KM-05</div> <div>• Optimising Supply Chain Relationships, L5, Cr15</div> </div> <div> <div>PRACTICAL COMPONENT</div> <div> <div>333905000-PM-01</div> <div>• Scan environment for impact on supply chain, L5, Cr5</div> </div> <div> <div>333905000-PM-02</div> <div>• Execute supply chain operational activities, L5, Cr15</div> </div> <div> <div>333905000-PM-03</div> <div>• Analyse and interpret supply chain workflow processes, L5, Cr5</div> </div> <div> <div>333905000-PM-04</div> <div>• Perform inventory and logistics operations, L5, Cr5</div> </div> <div> <div>333905000-PM-05</div> <div>• Optimise supply chain relationships, L5, Cr10</div> </div> </div> <div> <div>WORKPLACE COMPONENT</div> <div> <div>33905000-WM-01</div> <div>• Operational/divisional planning processes and procedures, L5, Cr3</div> </div> <div> <div>33905000-WM-02</div> <div>• Procedures and processes for sourcing products and services from external suppliers, L5, Cr8</div> </div> <div> <div>33905000-WM-03</div> <div>• The organisations logistics systems and procedures, L5, Cr8</div> </div> <div> <div>33905000-WM-04</div> <div>• Organisational client and supplier relationship policies and procedures, L5, Cr8</div> </div> <div> <div>33905000-WM-05</div> <div>• Organisational contract implementation, monitoring and controlling procedures, L5, Cr4</div> </div> <div> <div>33905000-WM-06</div> <div>• Organisations performance and risk awareness processes and procedures, L5, Cr8</div> </div> <div> <div>33905000-WM-07</div> <div>• Stores and stock administration processes within the supply chain, L5, Cr4</div> </div> <div> <div>33905000-WM-08</div> <div>• Distribution systems and procedures within the supply chain, L5, Cr4</div> </div> </div> <div> <div>Total credits required = 142 qualification award. Duration 1 year.</div> <div>Note: • This course includes work placement (experimental learning) for unemployed only</div> </div>			
<div>APPLICATION FEE</div> <div>Paid Upfront</div>	<div>R250</div>	<div>R250</div>	<div>R250</div>
<div>REGISTRATION FEE</div> <div>Paid Upfront</div>	<div>R3 100</div>	<div>R3 100</div>	<div>R3 100</div>
<div>ASSESSMENT & MODERATION</div>	<div>R8 500</div>	<div>R8 500</div>	<div>R8 500</div>
<div>TOTAL COST</div> <div>Per course,per year (all inclusive)</div>	<div>R30 450</div>	<div>R32 850</div>	<div>R43 398 (online Live) R56 850 (campus)</div>

Laptop (compulsory) - required for practical work exposure

[Online Application Form here](#)
[Pay Application Fee here](#)
[Pay Registration Fee here](#)

Silver Option

eLearning
(excl. revision classes)

Gold Option

eLearning
(live revisions & support)

Platinum Option

Online Classes
Campus/Classroom-based

International Diploma in Supply Chain Management

Monthly tuition fees include: Live Tuton/eLearning,Course Material, Tutore Support, Past Papers, Mock Exams Revision Workshops and Student Admin Support	R1550pm x 12 months	R1750pm x 12 months	R2750pm x 12 months
	<div>Compulsory Modules:</div> <ul style="list-style-type: none"> Supply Chain Management (SCM-M1) Procurement Management (PM-M2) Logistics and Transportation Management (LTM-M4) <ul style="list-style-type: none"> Warehouse Management (WM-M5) Supply Chain Analytics (SCA-M6) Supply Chain Finance (SCF-M7) International Trade and Customs (ITC-M8) <ul style="list-style-type: none"> Production Planning (PL-M10) Select one between S &OP and SCE <div>Optional Modules: <i>(Additional Fees Apply)</i></div> <div> <i>not required for certification requirements (additional fees apply - R7500 per module including exam fees, books and ELearning access + course certificate for each module passed):</i> <ul style="list-style-type: none"> Inventory Management (IM - 3) <ul style="list-style-type: none"> Retail Logistics (RLM11) Global Logistics Strategy (GLS-M12) Global Supply Chain Strategy (GSCS-M13) Supply Chain Network Planning (SCNP -M14) Global Commercial Strategy (GSC -M15) <ul style="list-style-type: none"> Project Management (PM-M16) Transport Operations Management (TOM-M17) Port and Shipping Operations (PSO -M18) </div> <div>Total modules required = 10. Duration 1 year.</div>		
APPLICATION FEE <i>Paid Upfront</i>	R250	R250	R250
REGISTRATION FEE <i>Paid Upfront</i>	R3 100	R3 100	R3 100
Global ASCM Professional MEMBERSHIP <i>Paid Upfront</i>	R3850	R3850	R3850
EXAM FEES per year	R 8 500	R 8 500	R 8 500
TOTAL COST Per course,per year (all inclusive)	Hard Books R46 800 eBooks R39 850	Hard Books R49 200 eBooks R42 250	Hard Books R61 200 eBooks R54 250

[Online Application Form here](#)
[Pay Application Fee here](#)
[Pay Registration Fee here](#)

Silver OptioneLearning
(excl. revision classes)**Gold Option**eLearning
(live revisions & support)**Platinum Option**Online Classes
Campus/Classroom-based**International CILT Certificate in Logistics and Transport (CILT accredited)**Monthly tuition fees include:
Live Tution/eLearning, Course
Material, and Admin Support**R1550pm x 12 months****R1750pm x 12 months****R2629pm x 12 months**
R3750pm x 12 months**Compulsory & pre-selected Elective Modules:**

- Business Theory M1-L3
- Bunsiness Application M2-L3
 - Inventory O2-L3
 - Procurement O4-L3
- Supply Chain Operations O7-L3

Optional Modules:

Freight Transport Logistics O5-L3 / Port Operation O11-L3 / Warehousing O1-L3

*Students should take note they must sit for 5 compulsory exams/modules
(2 mandatory under code M1 & M2 and 3 optional under code O -O1, O4 and O7,) at the certificate level.
Therefore, students who want to take additional modules above the 5 pre-selected modules above,
will be required to pay an extra fee of R5500 per module. However, t
hey are only required to pass 5 exams in order to get certified*

Total modules required = 5 with only 3 exams. Duration 1 year.**APPLICATION FEE**

Paid Upfront

R250**R250****R250****REGISTRATION FEE**

Paid Upfront

R3 100**R3 100****R3 100****CILT MEMBERSHIP**

Paid Upfront

R480**R480****R480****EXAM FEES**

R2125 per exam

R10 625**R10 625****R10 625****TOTAL COST**Per course, per year
(all inclusive)**R33 055****R35 455****R46 003 (online Live)**
R59 455 (campus)[Online Application Form here](#)[Pay Application Fee here](#)[Pay Registration Fee here](#)

Silver Option

eLearning
(excl. revision classes)

Gold Option

eLearning
(live revisions & support)

Platinum Option

Online Classes
Campus/Classroom-based

International CILT Diploma in Logistics and Transport (CILT accredited)

Monthly tuition fees include: Live Tuton/eLearning,Course Material, and Admin Support	R1550pm x 12 months	R1750pm x 12 months	R2629pm x 12 months R3750pm x 12 months
<div>Compulsory Modules:</div> <ul style="list-style-type: none"> D01 - Management in Logistics & Transport D02 - Supply Chain Management D10 - Sourcing & Procurement <ul style="list-style-type: none"> D13 - Warehousing <div>Optional Modules:</div> <ul style="list-style-type: none"> Retail Logistics Production Planning Project Management Transport Operations Supply Chain Network Planning Supply Chain Flow Planning International Businessg <div>Total modules required = 4 . Duration 1 year.</div>			
APPLICATION FEE Paid Upfront	R250	R250	R250
REGISTRATION FEE Paid Upfront	R3 100	R3 100	R3 100
CILT MEMBERSHIP Paid Upfront	R480	R480	R480
EXAM FEES R2125 per exam	R8 500	R8 500	R8 500
TOTAL COST Per course,per year (all inclusive)	R30 930	R33 330	R43 878

Silver Option eLearning (excl. revision classes)	Gold Option eLearning (live revisions & support)	Platinum Option Online Classes Campus/Classroom-based
---	---	--

International CILT Advanced Diploma in Logistics & Transport (CILT accredited)

Monthly tuition fees include: Live Tuton/eLearning,Course Material, Tutore Support, Past Papers, Mock Exams Revision Workshops and Student Admin Support	R1750pm x 12 months	R2500pm x 12 months	R3155pm x 12 months
<div> <div>Compulsory Modules:</div> <ul style="list-style-type: none"> Management in Logistics & Transport <i>(Non CILT diploma holders)</i> Leadership & Strategic Management <ul style="list-style-type: none"> Strategic Contexts Reseach Methods & Professional Project Delivering Strategic Performance Strategic Network Planning </div> <div> <div>Optional Modules:</div> <i>(Additional Fees Apply)</i> <ul style="list-style-type: none"> Supply Chain Management Sourcing & Procurement <ul style="list-style-type: none"> Retail Logistics Production Planning Project Management Transport Operations Supply Chains Flow Planning Supply Chain Network Planning </div> <div>Total modules required = min 5, max 9. Duration 1 year.</div>			
APPLICATION FEE Paid Upfront	R250	R250	R250
REGISTRATION FEE Paid Upfront	R3 100	R3 100	R3 100
CILT MEMBERSHIP Paid Upfront	R480	R480	R480
EXAM FEES per year	R12 500	R12 500	R12 500
TOTAL COST Per course,per year (all inclusive)	R34 330	R46 330	R54 190

Silver Option eLearning (excl. revision classes)	Gold Option eLearning (live revisions & support)	Platinum Option Online Classes Campus/Classroom-based
---	---	--

International Diploma in Procurement & Supply

<p>Monthly tuition fees include: Live Tuton/eLearning,Course Material, Tutore Support, Past Papers, Mock Exams Revision Workshops and Student Admin Support</p> <p>Excluded from instalments:</p> <p>CIPS Student Professional Membership Fees: R1881 pa Exam Fees: R1600 per module Books Fees: R980 per book (8 x modules)</p> <p>Our Facilitators are MCIPS Certified and are currently CIPS Members</p>	R1550pm x 12 months	R1750pm x 12 months	R3946,75pm x 12 months
	<div>Compulsory Modules:</div> <ul style="list-style-type: none"> L4M1 - Scope of Influence of Procurement & Supply <ul style="list-style-type: none"> L4M2 - Defining Business Need L4M3 - Commercial Contracting L4M4 - Ethical & Responsible Sourcing <ul style="list-style-type: none"> L4M5 - Commercial Negotiation L4M6 - Supplier Relationships L4M7 - Whole Life Asset Management L4M8 - Procurement & Supply in Practice <div>Your Preferred Supply Chain Institute</div> <p>Total modules required = 8 . Duration 1 year.</p>		
<div>APPLICATION FEE</div> <div>Paid Upfront</div>	R250	R250	R250
<div>REGISTRATION FEE</div> <div>Paid Upfront</div>	R3 100	R3 100	R3 100
<div>PRICE PER MODULE</div>	R2 781.25	R3 231.25	R5 920.13
<div>TOTAL COST</div>	R21 950	R24 350	R50 711

Silver Option eLearning (excl. revision classes)	Gold Option eLearning (live revisions & support)	Platinum Option Online Classes Campus/Classroom-based
---	---	--

International Advanced Diploma in Procurement & Supply

<p>Monthly tuition fees include: Live Tuton/eLearning,Course Material, Tutore Support, Past Papers, Mock Exams Revision Workshops and Student Admin Support</p> <p>Excluded from instalments:</p> <p>CIPS Student Professional Membership Fees: R1881 pa Exam Fees: R1600 per module Books Fees: R980 per book (8 x modules)</p> <p>Our Facilitators are MCIPS Certified and are currently CIPS Members</p>	R1854pm x 12 months	R2154pm x 12 months	R3925pm x 12 months
<div>Compulsory Modules:</div> <ul style="list-style-type: none"> Managing Teams & Individuals - M1 Managing Supply Chain Risks - M2 Managing Contractual Risks - M3 Advanced Contract & Financial Management - M4 Managing Ethical Procurement & Supply - M5 <div>Elective Modules (select 3)</div> <ul style="list-style-type: none"> Category Management - M6 Project & Change Management - 8 Operations Management - M9 Achieving Competitive Advantage through Supply Chains - M7 <p>Total modules required = 8 . Duration 1 year.</p>			
APPLICATION FEE Paid Upfront	R250	R250	R250
REGISTRATION FEE Paid Upfront	R3 100	R3 100	R3 100
PRICE PER MODULE	R2 781.25	R3 231.25	R5 920.13
TOTAL COST	R25 598	R29 198	R50 450

Silver Option

eLearning
(excl. revision classes)

Gold Option

eLearning
(live revisions & support)

Platinum Option

Online Classes
Campus/Classroom-based

International Professional Diploma in Procurement & Supply

Monthly tuition fees include:
Live Tuton/eLearning,Course
Material, Tutore Support,
Past Papers, Mock Exams
Revision Workshops
and Student Admin Support

Excluded from instalments:

CIPS Student Professional
Membership Fees: R1881 pa
Exam Fees: R1600 per module
Books Fees: R980 per book
(8 x modules)

Our Facilitators are MCIPS
Certified and are currently
CIPS Members

R2046pm x 12 months

R2846pm x 12 months

R4446pm x 12 months

Compulsory Modules:

- Strategic Ethical Leadership - 12 Credits - M1
- Global Commercial Strategy - 12 Credits - M2
- Global Strategic Supply Chain Management - M3
- Fututre Strategic Challenges for the Profession - M4

Elective Modules: (3 modules - 18 credits)

- Global Logistics Strategy - M10
- Strategic Programme Leadership - M5
- Innovation in Procurement & Supply - M8
- Supply Chain Network Design - M9

Total modules required = 8 . Duration 1 year.

APPLICATION FEE
Paid Upfront

R250

R250

R250

REGISTRATION FEE
Paid Upfront

R3 100

R3 100

R3 100

PRICE PER MODULE

R3 070

R4 270

R6 670

TOTAL COST

R27 902

R37 502

R56 702

[Online Application Form here](#)

[Pay Application Fee here](#)

[Pay Registration Fee here](#)

Silver OptioneLearning
(excl. revision classes)**Gold Option**eLearning
(live revisions & support)**Platinum Option**Online Classes
Campus/Classroom-based**Advanced Certificate in Procurement & Supply Operations (CIPS accredited)**

Monthly tuition fees include:
Live Tutition/eLearning, Course
Material, Tutore Support,
Past Papers, Mock Exams
Revision Workshops
and Student Admin Support

Excluded from instalments:

CIPS Student Professional
Membership Fees: R1881
Exam Fees: R1550 per module
Books Fees: R980 per book
(5 x modules)

Our Facilitators are MCIPS
Certified and are currently
CIPS Members

R3070pm x 6 months**R4270pm x 6 months****R6670pm x 6 months****Modules Covered Over 6 - 12 Months:**

- Procurement & Supply Environment - L3M1
- Ethical Procurement & Supply - L3M2 Contracts Administration - L3M3
- Team Dynamics & Change - L3M4

Optional Modules:

- Only select one (1) Socially Responsible Warehousing & Distribution - L3M6

Total modules required = 5 . Duration: 6 months to 1 year.**APPLICATION FEE*****Paid Upfront*****R250****R250****R250****REGISTRATION FEE*****Paid Upfront*****R3 100****R3 100****R3 100****PRICE PER MODULE****R3 070****R4 270****R6 670****TOTAL COST****R21 770****R28 970****R43 370**[Online Application Form here](#)[Pay Application Fee here](#)[Pay Registration Fee here](#)

Silver OptioneLearning
(excl. revision classes)**Gold Option**eLearning
(live revisions & support)**Platinum Option**Online Classes
Campus/Classroom-based**Certificate in Procurement & Supply Operations (CIPS accredited)**

Monthly tuition fees include:
Live Tution/eLearning, Course
Material, Tutore Support,
Past Papers, Mock Exams
Revision Workshops
and Student Admin Support

Excluded from instalments:

CIPS Student Professional
Membership Fees: R1881
Exam Fees: R1550 per module
Books Fees: R980 per book
(5 x modules)

Our Facilitators are MCIPS
Certified and are currently
CIPS Members

R3070pm x 6 months**R4270pm x 6 months****R6670pm x 6 months****Modules Covered Over 6 - 12 Months:**

- Introduction to Procurement & Supply - L2M1
- Procurement & Supply Operations - L2M2
 - Stakeholder Relationships - L2M3
 - Systems Technology - L2M4
- Inventory Logistics & Expediting - L2M5

Total modules required = 5 . Duration: 6 months to 1 year.

APPLICATION FEE***Paid Upfront*****R250****R250****R250****REGISTRATION FEE*****Paid Upfront*****R3 100****R3 100****R3 100****PRICE PER MODULE****R3 070****R4 270****R6 670****TOTAL COST****R21 770****R28 970****R43 370**[Online Application Form here](#)[Pay Application Fee here](#)[Pay Registration Fee here](#)

Silver OptioneLearning
(excl. revision classes)**Gold Option**eLearning
(live revisions & support)**Platinum Option**Online Classes
Campus/Classroom-based**International Certificate in Supply Chain Operations**Monthly tuition fees include:
Live Tuton/eLearning, Course
Material, and Admin Support**R1550pm x 12 months****R1750pm x 12 months****R2629pm x 12 months**
R3750pm x 12 months**Compulsory & pre-selected Elective Modules:**

- CORE: Supply Chain Operations M1,
- CORE: Business Theory and Application M2
 - Fundamental: Inventory M3
 - Fundamental: Procurement M4
- Fundamental: Freight Transport Logistics M5
- Fundamental: Global Logistics M6

Optional Modules:

Optional: Warehousing M7 • Optional: Transport Operations M 8
Optional: Transport Planning M 9 • Optional: Green Logistics, M 10 • Optional: Port Operation M11

Students should take note they must sit for 6 compulsory exams/modules (M1 -M6) to complete the course. For students who want to take additional (optional) modules above the 6 compulsory modules, will be required to pay an extra fee of R5500 per module. However, students are only required to pass 6 exams to get certified.

Total modules required = 6 with 6 exams. Duration 1 year.**APPLICATION FEE**

Paid Upfront

R250**R250****R250****REGISTRATION FEE**

Paid Upfront

R3 100**R3 100****R3 100****CILT MEMBERSHIP**

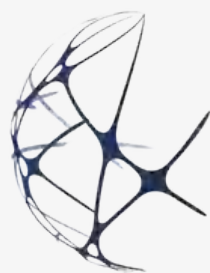
Paid Upfront

R480**R480****R480****EXAM FEES**

R2125 per exam

R10 625**R10 625****R10 625****TOTAL COST**Per course, per year
(all inclusive)**R33 055****R35 455****R46 003 (online Live)**
R59 455 (campus)[Online Application Form here](#)[Pay Application Fee here](#)[Pay Registration Fee here](#)

The END



THE SCA GLOBAL
THE SUPPLY CHAIN ACADEMY-SCA GLOBAL
Your Potential. Our Passion.

Online application form available here :
www.supply-chain.academy/application/



+2787 057-6577 (office)



+2779 081-9412 ([WhatsApp](#))



www.supply-chain.academy

BANKING DETAILS :

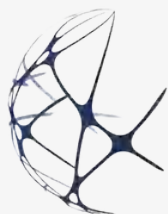
BANK NAME : **First National Bank (FNB)**

ACCOUNT NO: **628 1659 8174**

ACC HOLDER : **The Supply Chain Academy-SCA Global**

Proof of payment for fees paid to be emailed to :

finance@supply-chain.academy



THE SCA GLOBAL
THE SUPPLY CHAIN ACADEMY-SCA GLOBAL
Your Potential. Our Passion.

